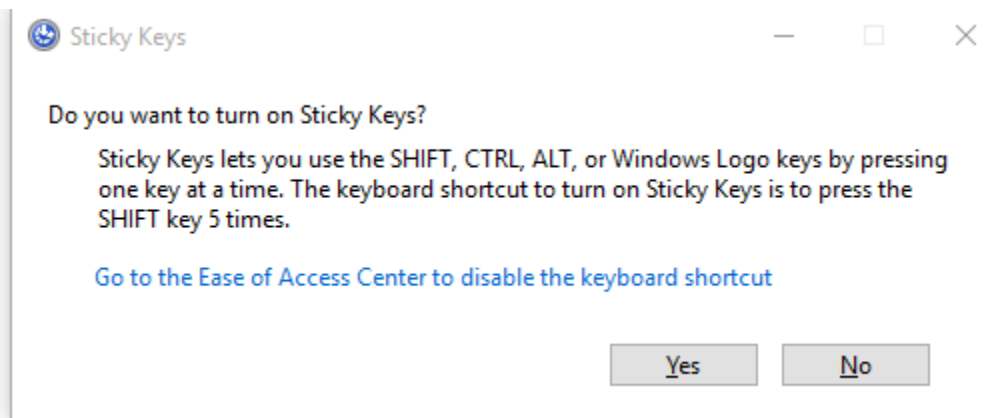


Define Sticky key

Sticky keys is an accessibility feature of some graphical user interfaces to assist users who have physical disabilities. The Sticky Keys feature makes a modifier key remain active until another key is pressed. This lets you press a single key at a time to access a keyboard shortcut. For example, you need to press Ctrl + Shift + A. With Sticky Keys enabled, you can press and release the Ctrl key, then the Shift key, and finally the A key. You don't have to press all three keys down at once.

To Turn On or Off Sticky Keys in Windows 10

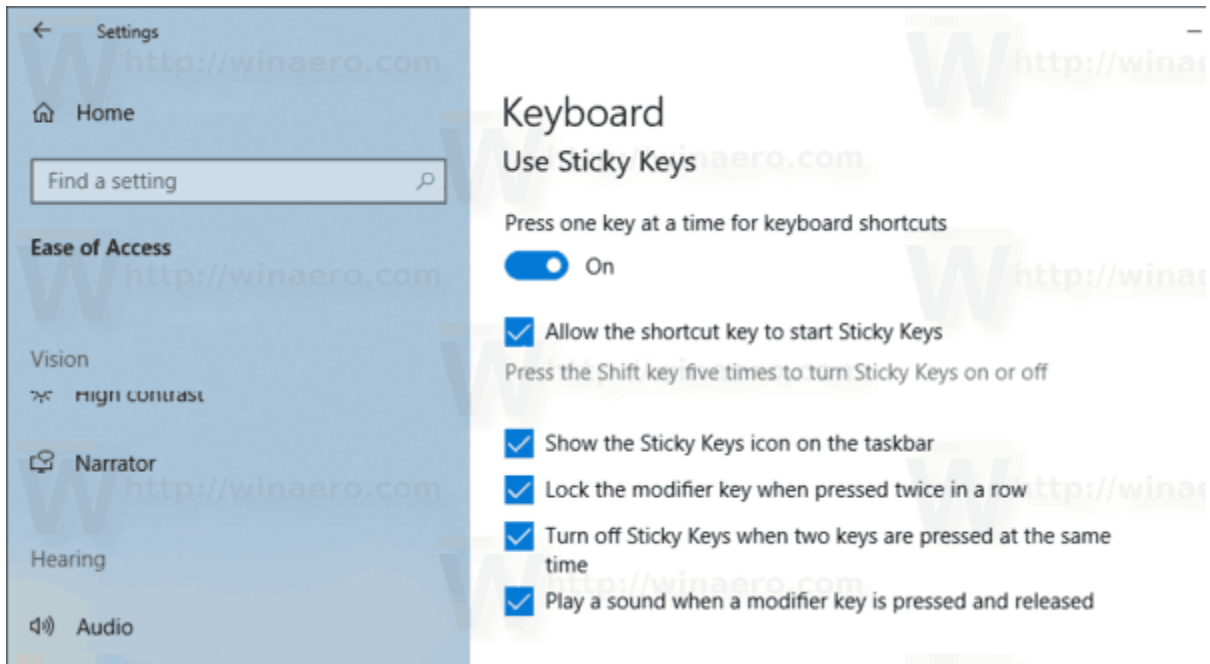
1. Press the Shift key five times to turn Sticky Keys on. Confirm the operation.



2. A sound will play indicating that the feature is now enabled.
3. When Sticky Keys is turned on, press the Shift key five times to disable the feature.
4. A low pitch sound will play when it is disabled.

Turn On or Off Sticky Keys with Settings

1. Open the [Settings app](#).
2. Go to Ease of Access -> Keyboard.
3. On the right, enable the option *Press one key at a time for keyboard shortcuts* to turn on Sticky Keys.



4. You can customize the following options:

- Allow the shortcut key to start Sticky Keys
- Show the Sticky Keys icon on the taskbar
- Lock the modifier key when pressed twice in a row
- Turn off Sticky Keys when two keys are pressed at the same time
- Play a sound when a modifier key is pressed and released

5. Finally, to disable Sticky Keys, turn off the option *Press one key at a time for keyboard shortcuts*.